

Intel® Ethernet Value

Reliable Performance

- It just works
- Broad OS support
- Designed for multi-core processors
- Low latency Ethernet

Best Choice for Virtualization

- Outstanding virtualization performance with Intel® Virtualization Technology for Connectivity
- Leadership in virtual system scalability
- Broad VM support (VMWare ESX*, Microsoft Hyper-V* and Xen*)

Unified Networking

- Fibre Channel over Ethernet
- iSCSI with trusted, native OS support
- Support for data center bridging with lossless Ethernet

Intel® Ethernet Server and Desktop Adapters

Connectivity you can count on.

Compatibility tested for trouble-free interoperability with network infrastructure elements.

Broad selection from 10/100 Mbps to 10 Gbps, for copper or fiber, from PCI to PCI Express*, BASE-T to SFP+, with network reach from 1 meter to 10 kilometers and in single- to quad-port configurations. Other form factors including custom mezzanine cards and express modules are available upon request.

Performance and reliability backed by more than 25 years of network connectivity experience and Intel world-wide customer support.

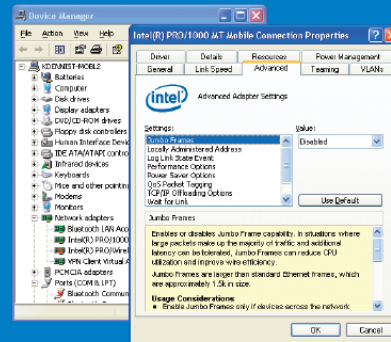
Easy installation and management with Intel® PROSet for Windows Device Manager* and other tools.

Worldwide availability and environmentally friendly for compliance with global market requirements.

Quick and Easy Adapter Management

Powerful point-and-click configuration tool for advanced adapter features, connection teaming, even VLANs, with Intel® PROSet for Windows Device Manager*.

- **Convenient access** to Intel® PROSet Utility, now integrated in Windows Device Manager.
- **Simple, integrated tools** make it easy to manage and troubleshoot Ethernet connections in both servers and client computers.
- **Supports multi-vendor teaming** for adapter compatibility with most on-board connections.



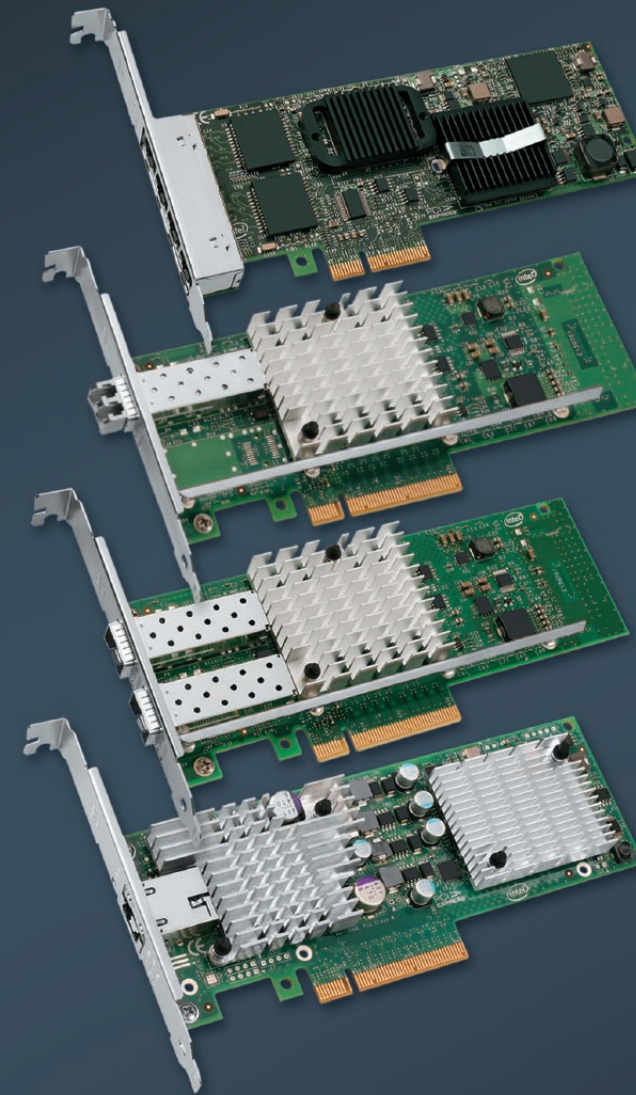
Ethernet Everywhere. It Just Works.



©2009 Intel Corporation. All rights reserved. Intel, the Intel logo, and Intel SingleDriver are trademarks or registered trademarks of Intel Corporation or its subsidiaries in the United States and other countries.

*Other names and brands may be claimed as the property of others.

Printed in USA/0609/TR/PMS/PP/3K 252454-016US



Intel® Ethernet Server and Desktop PCI Express* Adapters

Product Selection Guide

Reliable Performance ▪ Best Choice for Virtualization ▪ Unified Data and Storage Networking

Speed/Port	10Gbps - Copper for Servers and Workstations						10Gbps - Fiber for Servers and Workstations						
Brand Name	Intel® Ethernet Server Adapter X520-DA2	Intel® 10 Gigabit AT2 Server Adapter	NetEffect™ Ethernet Server Cluster Adapter CX4	NetEffect™ Ethernet Server Cluster Adapter DA	Intel® 10 Gigabit AF DA Dual Port Server Adapter	Intel® 10 Gigabit CX4 Dual Port Server Adapter	Intel® Ethernet Server Adapter X520-SR1	Intel® Ethernet Server Adapter X520-SR2	Intel® Ethernet Server Adapter X520-LR1	NetEffect™ Ethernet Server Cluster Adapter SFP+ SR	Intel® 10 Gigabit XF LR Server Adapter	Intel® 10 Gigabit XF SR Dual Port Server Adapter	Intel® 10 Gigabit XF SR Server Adapter
Product Code	E10G42BTDA	E10G41AT2	E10G81GTCX4	E10G81GP	E10G42AFDA	EXPX9502CX4	E10G41BFSR	E10G42BFSR	E10G41BFLR	E10G81GFSR	EXPX9501AFXLR	EXPX9502AFXSR	EXPX9501AFXSR
Ethernet Controller(s)	Intel® 82599ES	Intel® 82598EB	NetEffect™ NE020	NetEffect™ NE020	Intel® 82598EB	Intel® 82598EB	Intel® 82599ES	Intel® 82599ES	Intel® 82599ES	NetEffect™ NE020	Intel® 82598EB	Intel® 82598EB	Intel® 82598EB
Connector & Cable Medium	SFP+ Direct Attach Copper	RJ45-Copper	CX4 Copper	SFP+ Direct Attach Copper	SFP+ Direct Attach Copper	CX4 Copper	LC Fiber Optic	LC Fiber Optic	LC Fiber Optic	LC Fiber Optic	LC Fiber Optic	LC Fiber Optic	LC Fiber Optic
Cabling Type	SFP+ Direct Attached Twin Axial Cabling up to 10 m	Category-6 up to 55 m Category-6A up to 100 m	8 pair, 100ohm Twin Axial Cabling up to 15 m	SFP+ Direct Attached Twin Axial Cabling up to 10 m	SFP+ Direct Attached Twin Axial Cabling up to 10 m	8 pair, 100 ohm Twin Axial Cabling up to 15 m	MMF 62.5/50 µm up to 300 m	MMF 62.5/50 µm up to 300 m	SMF up to 10 km	MMF 62.5/50 µm up to 300 m	SMF up to 10 km	MMF 62.5/50 µm up to 300 m	MMF 62.5/50 µm up to 300 m
Slot Type, Maximum Bus Speed & Slot Width	PCI Express* 2.0 5.0 GT/s x 8 Lane	PCI Express* 2.0 2.5 GT/s Lane x 8 Lane	PCI Express* 1.1 2.5 GHz/Lane x 8 Lane	PCI Express* 1.1 2.5 GHz/Lane x 8 Lane	PCI Express* 2.0 2.5 GT/s Lane x 8 Lane	PCI Express* 2.0 2.5 GT/s Lane x 8 Lane	PCI Express* 2.0 5.0 GT/s x 8 Lane	PCI Express* 2.0 5.0 GT/s x 8 Lane	PCI Express* 2.0 5.0 GT/s x 8 Lane	PCI Express* 1.1 2.5 GHz/Lane x 8 Lane	PCI Express* 2.0 2.5 GT/s Lane x 8 Lane	PCI Express* 2.0 2.5 GT/s Lane x 8 Lane	PCI Express* 2.0 2.5 GT/s Lane x 8 Lane
Ports	Dual Port	Single Port	Single Port	Single Port	Dual Port	Dual Port	Single Port	Dual Port	Single Port	Single Port	Single Port	Dual Port	Single Port
Supported Slot Height(s)	Low Profile and Full Height	Low Profile and Full Height	Low Profile and Full Height	Low Profile and Full Height	Low Profile and Full Height	Low Profile and Full Height	Low Profile and Full Height	Low Profile and Full Height	Low Profile and Full Height	Low Profile and Full Height	Low Profile and Full Height	Low Profile and Full Height	Low Profile and Full Height
Intel® VT for Connectivity ¹	Virtual Machine Device Queues (VMDq) Virtual Machine Direct Connect (VMDc)	Virtual Machine Device Queues (VMDq)	NA	NA	Virtual Machine Device Queues (VMDq)	Virtual Machine Device Queues (VMDq)	Virtual Machine Device Queues (VMDq) Virtual Machine Direct Connect (VMDc)	Virtual Machine Device Queues (VMDq) Virtual Machine Direct Connect (VMDc)	Virtual Machine Device Queues (VMDq) Virtual Machine Direct Connect (VMDc)	NA	Virtual Machine Device Queues (VMDq)	Virtual Machine Device Queues (VMDq)	Virtual Machine Device Queues (VMDq)
Security Features	IPSEC/LinkSec	NA	NA	NA	NA	NA	IPSEC/LinkSec	IPSEC/LinkSec	IPSEC/LinkSec	NA	NA	NA	NA
IWARP/RDMA	NA	NA	Yes	Yes	NA	NA	NA	NA	NA	Yes	NA	NA	NA

Speed/Port	1GB - Copper for Servers and Workstations					1GB - Fiber for Servers and Workstations				1GB - Copper Desktops
Brand Name	Intel® Gigabit ET Dual Port Server Adapter	Intel® Gigabit ET Quad Port Server Adapter	Intel® PRO/1000 PT Server Adapter	Intel® PRO/1000 PT Dual Port Server Adapter	Intel® PRO/1000 PT Quad Port LP Server Adapter	Intel® Gigabit EF Dual Port Server Adapter	Intel® PRO/1000 PF Server Adapter	Intel® PRO/1000 PF Dual Port Server Adapter	Intel® PRO/1000 PF Quad Port Server Adapter	Intel® Gigabit CT Desktop Adapter
Product Code	E1G42ET	E1G44ET	EXPI9400PT EXPI9400PTBLK	EXPI9402PT EXPI9402PTBLK	EXPI9404PTL EXPI9404PTLBLK	E1G42EF	EXPI9400PF EXPI9400PFBLK	EXPI9402PF EXPI9402PFBLK	EXPI9404PF EXPI9404PFBLK	EXPI9301CT
Ethernet Controller(s)	Intel® 82576	Intel® 82576	Intel® 82572GI	Intel® 82571GB	Intel® 82571GB	Intel® 82576	Intel® 82572GI	Intel® 82571GB	Intel® 82571GB	Intel® 82574L
Connector & Cable Medium	RJ-45 Copper	RJ-45 Copper	RJ-45 Copper	RJ-45 Copper	RJ-45 Copper	LC Fiber Optic	LC Fiber Optic	LC Fiber Optic	LC Fiber Optic	RJ-45 Copper
Cabling Type	Category-5 up to 100 m	Category-5 up to 100 m	Category-5 up to 100 m	Category-5 up to 100 m	Category-5 up to 100 m	MMF 62.5/50 µm up to 275 m	MMF 62.5/50 µm up to 275 m	MMF 62.5/50 µm up to 275 m	MMF 62.5/50 µm up to 275 m	Category-5 up to 100 m
Slot Type, Maximum Bus Speed & Slot Width	PCI Express* 2.0 2.5 GT/s Lane x 4 Lane	PCI Express* 2.0 2.5 GT/s Lane x 4 Lane	PCI Express* 2.5 GT/s Lane x 1 Lane	PCI Express* 2.5 GT/s Lane x 4 Lane	PCI Express* 2.5 GT/s Lane x 4 Lane	PCI Express* 2.0 2.5 GT/s Lane x 4 Lane	PCI Express* 2.5 GT/s Lane x 4 Lane	PCI Express* 2.5 GT/s Lane x 4 Lane	PCI Express* 2.5 GT/s Lane x 4 Lane	PCI Express* 1.1 2.5 GT/s Lane x 1 Lane
Ports	Dual Port	Quad Port	Single Port	Dual Port	Quad Port	Dual Port	Single Port	Dual Port	Quad Port	Single Port
Supported Slot Height(s)	Low Profile and Full Height	Low Profile and Full Height	Low Profile and Full Height	Low Profile and Full Height	Low Profile and Full Height	Low Profile and Full Height	Low Profile and Full Height	Low Profile and Full Height	Full Height	Low Profile and Full Height
Intel® VT for Connectivity ¹	Virtual Machine Device Queues (VMDq) Virtual Machine Direct Connect (VMDc)	Virtual Machine Device Queues (VMDq) Virtual Machine Direct Connect (VMDc)	NA	NA	NA	Virtual Machine Device Queues (VMDq) Virtual Machine Direct Connect (VMDc)	NA	NA	NA	Virtual Machine Device Queues (VMDq)
Security Features	IPsec	IPsec	NA	NA	NA	NA	NA	NA	NA	NA
IWARP/RDMA	NA	NA	NA	NA	NA	NA	NA	NA	NA	NA

Ethernet Everywhere. It Just Works.

For additional product information, please visit:
www.intel.com/go/ethernetserver



¹Intel® VT for Connectivity = Intel® I/OAT + VMDq