



The bridge to possible

[Data sheet](#)
Cisco public

Cisco Business 220 Series Smart Switches

Contents

Value statement	3
Product overview	3
Prominent feature	4
Product sustainability	6
Product specifications	7
System requirements	19
Ordering information	20
Warranty information	22
Cisco and partner services	22
Cisco Capital	22
Custom call to action	22

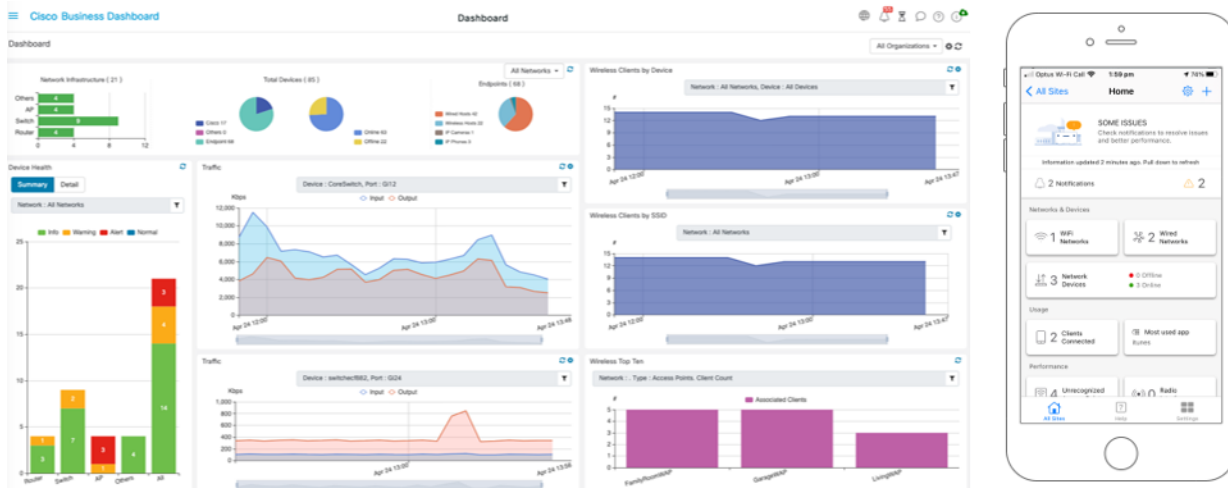
Value statement

Simple, affordable business networking

Product overview

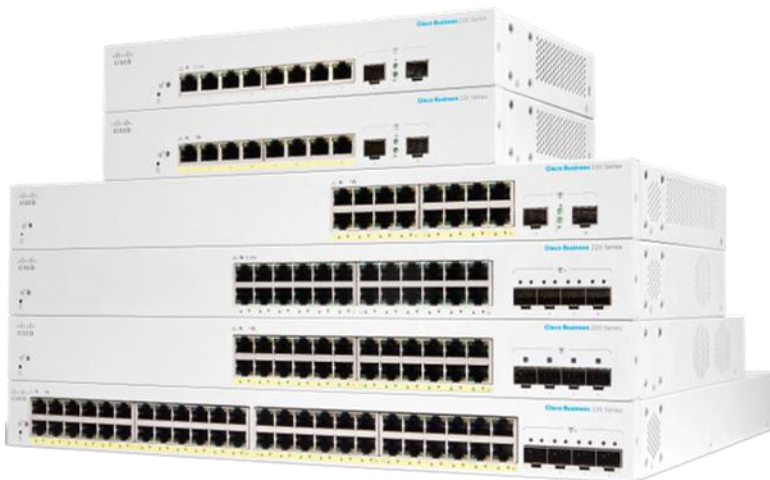
From connectivity to cloud applications, networking plays a crucial role in every business journey. Reliability, security, and affordability continue to be priorities, while ongoing management and operations add additional complexity that takes time and resources.

Cisco Business is a portfolio of affordable wireless access points, switches, and routers designed and built for Small Business. Managed through Cisco Business Dashboard and mobile app, the portfolio provides a simple and reliable experience. Cisco Business Dashboard simplifies traditional challenges in deploying and managing business networks by automating the deployment, monitoring, and lifecycle management of the network.



Cisco Business 220 Series Smart Switches

The Cisco Business 220 Series are affordable smart switches with ease of use, security, and reliability for business-class networks. With intuitive dashboard, Power over Ethernet (PoE) options, and customizable features, these switches deliver a solid business network within your budget parameters. When you need a business-class network and cost is top priority, Cisco Business 220 Series provides an excellent solution.



Prominent feature

Business Applications

With Cisco Business 220 Series switches, you can not only build an efficient and reliable network to connect the workforce, you can also create advanced solutions to deliver data, voice, and video services on a converged infrastructure. Get the best value for your money by improving the productivity of employees. Possible deployment scenarios include:

- **Small office networking:** The versatility and affordability of the Cisco Business 220 Series family of switches provide an ideal business-class networking foundation for small businesses with limited IT support and budget.
- **Wireless connectivity.** With PoE+ support, and comprehensive security and Quality of Service (QoS) capabilities, Cisco Business 220 Series switches provide a solid foundation to add business-grade wireless to the network. You can easily deploy Cisco Business wireless access points to increase workforce productivity without worrying about power and throughput.
- **Unified communications.** The Cisco Business 220 Series switches provide QoS features to automatically prioritize delay-sensitive traffic to help you easily deploy an IP-based communication solution on a converged network. PoE+ support can enable IP cameras and videophones to be easily added to your current network. Cisco offers a complete portfolio of IP telephony and other unified communications products designed for small businesses. Cisco Business 220 Series switches have been rigorously tested to help ensure easy integration and full compatibility with these and other vendor products.

Features and benefits

Cisco Business 220 Series provides capabilities that help you create business-class networks. These features deliver a solution to simplify the operation, increase uptime, and get your business better connected to employees, customers, and suppliers. Some primary features include:

- **Easy configuration and deployment.** Cisco Business 220 Series switches are designed to be easy to deploy and use by small businesses and the partners that manage them. Other ease-of-use features include the following:
 - Cisco Business Dashboard is designed to manage Cisco Business switches, routers, and wireless access points. Using the Dashboard, you easily customize the interface and widgets to proactively manage your network. Cisco Business 220 Series switches connect directly to Cisco Business Dashboard, eliminating the need to set up separate hardware or a virtual machine on site. For more information, visit <https://www.cisco.com/go/cbd>.
 - The Cisco Network Plug and Play solution provides a simple, secure, unified, and integrated offering to ease new device rollouts, as well as provisioning updates to an existing network. The solution provides a unified approach to provision Cisco routers, switches, and wireless devices with a zero touch deployment experience.
 - The simple and intuitive web-based interfaces enable users without extensive IT expertise to configure, manage, and troubleshoot the switch in minutes. Configuration wizards simplify the most common configuration tasks and provide the tool for anyone to set up and manage the network.

-
- **Reliability and performance.** Cisco Business 220 Series switches have been tested to deliver the high availability and performance that users have come to expect from Cisco switches. The switches speed up file transfer times, keep vital business applications available, and help your employees respond more quickly to customers and each other. With enhanced QoS capabilities, the Cisco Business 220 Series also gives you the flexibility to manage and prioritize high-bandwidth traffic so you can easily integrate all the business communications and connectivity needs on a single converged infrastructure.
 - **Power over Ethernet (PoE).** PoE+ streamlines the deployment for wireless access points, IP telephony, and video surveillance by allowing power and data to run over a single network cable. Cisco Business 220 Series switches support PoE+, which provides up to 30 watts of power per port. PoE+ can enable deployments for 802.11ac wireless access points, Pan Tilt Zoom (PTZ) IP cameras, and videophones, delivering more flexibility and investment protection.
 - **Network security.** The Cisco Business 220 Series switches provide new levels of security for smart switches and deliver more ways to safeguard your network.
 - Support for network security applications such as the Institute for Electrical and Electronic Engineers (IEEE) 802.1X and port security can tightly limit access to specific segments of your network.
 - Extensive Access Control Lists (ACLs) can restrict sensitive portions of the network from unauthorized users and guard against network attacks.
 - Security mechanisms such as broadcast/multicast/unknown unicast storm control and Bridge Protocol Data Unit (BPDU) guard can protect the network from invalid configurations or malicious intent.
 - Denial-of-Service (DOS) attack prevention helps to increase uptime in the event of a network attack.
 - **Optimal energy efficiency.** Cisco Business 220 Series switches are designed with Energy Efficient Ethernet (IEEE 802.3az) and Energy Detect support on all models, as well as fanless designs on selected models. These designs help you save operational expenses and reduce your environmental footprint.
 - **Peace of mind and investment protection.** Cisco Business 220 Series switches offer the reliable performance, investment protection, and peace of mind you expect from a Cisco switch. Complementary one-year access to our Small Business Support Center provides ongoing support. The 3-year limited hardware warranty with return to factory replacement keeps your business running smoothly.

Product sustainability

Information about Cisco’s environmental, Social and Governance (ESG) initiatives and performance is provided in Cisco’s CSR and sustainability [reporting](#).

Table 1. Cisco environmental sustainability information

Sustainability Topic		Reference
General	Information on product-material-content laws and regulations	Materials
	Information on electronic waste laws and regulations, including our products, batteries and packaging	WEEE Compliance
	Information on product takeback and reuse program	Cisco Takeback and Reuse Program
	Sustainability Inquiries	Contact: csr_inquiries@cisco.com
	Environment (unit dimensions, unit weight, power, certifications, operating temperature, storage temperature, operating humidity, storage humidity)	Table2. Product Specifications
	Accoustic noise and Mean Time Before Failure	Table2. Product Specifications
Power	Power Efficiency	Features and Benefits Table2. Product Specifications
	Power Consumption	Table2. Product Specifications
Material	Product packaging weight and materials	Contact: environment@cisco.com
	Package Contents	Table2. Product Specifications

Product specifications

Table 2 lists the product specifications for the Cisco Business 220 Series Smart Switches.

Table 2. Product specifications

Feature	Description		
Performance			
Switching capacity	Model name	Forwarding rate in millions of packets per second (mpps; 64-byte packets)	Switching capacity in Gigabits per second (Gbps)
	CBS220-8T-E-2G	14.88	20
	CBS220-8P-E-2G	14.88	20
	CBS220-8FP-E-2G	14.88	20
	CBS220-16T-2G	26.78	36
	CBS220-16P-2G	26.78	36
	CBS220-24T-4G	41.66	56
	CBS220-24P-4G	41.66	56
	CBS220-24FP-4G	41.66	56
	CBS220-48T-4G	74.38	104
	CBS220-48P-4G	74.38	104
	CBS220-24T-4X	95.23	128
	CBS220-24P-4X	95.23	128
	CBS220-24FP-4X	95.23	128
	CBS220-48T-4X	130.94	176
	CBS220-48P-4X	130.94	176
CBS220-48FP-4X	130.94	176	

Feature	Description
Layer 2 switching	
MAC table	Up to 8,192 Media Access Control (MAC) addresses
Spanning Tree Protocol (STP)	Standard 802.1d Spanning Tree support, enabled by default Fast convergence using 802.1w (Rapid Spanning Tree [RSTP]) Multiple Spanning Tree instances using 802.1s (MSTP) 16 instances are supported
Port grouping	Support for IEEE 802.3ad Link Aggregation Control Protocol (LACP) <ul style="list-style-type: none"> • Up to 8 groups • Up to 8 ports per group with 16 candidate ports for each (dynamic) 802.3ad link aggregation Load balance based on source and destination MAC address, or source and destination MAC/IP
VLAN	Support for up to 256 Virtual Local Area Networks (VLANs) simultaneously Port-based and 802.1Q tag-based VLANs Management VLAN Guest VLAN
Auto voice VLAN	Voice traffic is automatically assigned to a voice-specific VLAN and treated with appropriate levels of QoS
QinQ VLAN	VLANs transparently cross a service provider network while isolating traffic among customers
Generic VLAN Registration Protocol (GVRP) and Generic Attribute Registration Protocol (GARP)	Protocols for automatically propagating and configuring VLANs in a bridged domain
Head-of-Line (HOL) blocking	HOL blocking prevention
Jumbo frame	Frame sizes up to 9,216 supported
Loopback detection	Loopback detection provides protection against loops by transmitting loop protocol packets out of ports on which loop protection has been enabled. It operates independently of STP.
Automatic Media-Dependent Interface Crossover (MDIX)	Automatically adjusts transmit and receive pairs if an incorrect cable type (crossover or straight-through) is installed.

Feature	Description
Security	
ACLs	Drop or rate limit based on source and destination MAC, VLAN ID or IP address, protocol, port, Differentiated Services Code Point (DSCP)/IP precedence, Transmission Control Protocol (TCP)/ User Datagram Protocol (UDP) source and destination ports, 802.1p priority, Ethernet type, Internet Control Message Protocol (ICMP) packets, Internet Group Management Protocol (IGMP) packets, TCP flag Support up to 512 rules
Port security	Creates the ability to lock source MAC addresses to ports; limits the number of learned MAC addresses
IEEE 802.1X (authenticator role)	802.1X: Remote Authentication Dial-in User Service (RADIUS) authentication; guest VLAN; Single-host, multiple-host, and multisession mode
RADIUS, TACACS+	Supports RADIUS and Terminal Access Controller Access Control System (TACACS) authentication; switch functions as a client
MAC address filtering	Supported
Storm control	Broadcast, multicast, and unknown unicast
DoS protection	DOS attack prevention
STP Bridge Protocol Data Unit (BPDU) Guard	This security mechanism protects the network from invalid configurations. A port enabled for BPDU Guard is shut down if a BPDU message is received on that port.
Spanning Tree Loop Guard	This feature provides additional protection against Layer 2 forwarding loops (STP loops).
Secure Shell (SSH) Protocol	SSH is a secure replacement for Telnet traffic. SCP also uses SSH. SSH v1 and v2 are supported.
Secure Sockets Layer (SSL)	SSL support: Encrypts all HTTPS traffic, allowing highly secure access to the browser-based management GUI in the switch
QoS	
Priority levels	8 hardware queues per port
Scheduling	Strict priority and Weighted Round-Robin (WRR) queue assignment based on DSCP and class of service (802.1p/CoS)
Class of service	Port-based; 802.1p VLAN priority-based; IPv4/v6 IP precedence, Type of Service (ToS), and DSCP-based; Differentiated Services (DiffServ); classification and re-marking ACLs, trusted QoS
Rate limiting	Ingress policer; egress shaping and rate control; per VLAN, per port, and flow-based
Congestion avoidance	A TCP congestion avoidance algorithm is required to reduce and prevent global TCP loss synchronization.

Feature	Description
Multicast	
Internet Group Management Protocol (IGMP) Versions 1, 2, and 3 Snooping	IGMP limits bandwidth-intensive multicast traffic to only the requesters; supports 256 multicast groups
IGMP querier	IGMP querier is used to support a Layer 2 multicast domain of snooping switches in the absence of a multicast router
Standards	
Standards	<p>IEEE 802.3 10BASE-T Ethernet, IEEE 802.3u 100BASE-TX Fast Ethernet, IEEE 802.3ab 1000BASE-T Gigabit Ethernet, IEEE 802.3ad LACP, IEEE 802.3z Gigabit Ethernet, IEEE 802.3x Flow Control, IEEE 802.1D (STP, GARP, and GVRP), IEEE 802.1Q/p VLAN, IEEE 802.1w RSTP, IEEE 802.1s Multiple STP, IEEE 802.1X Port Access Authentication, IEEE 802.3af, IEEE 802.3at, RFC 768, Request for Comments (RFC) 783, RFC 791, RFC 792, RFC 793, RFC 813, RFC 879, RFC 896, RFC 826, RFC 854, RFC 855, RFC 856, RFC 858, RFC 894, RFC 919, RFC 922, RFC 920, RFC 950, RFC 1042, RFC 1071, RFC 1123, RFC 1141, RFC 1155, RFC 1157, RFC 1350, RFC 1533, RFC 1541, RFC 1624, RFC 1700, RFC 1867, RFC 2030, RFC 2616, RFC 2131, RFC 2132, RFC 3164, RFC 3411, RFC 3412, RFC 3413, RFC 3414, RFC 3415, RFC 2576, RFC 4330, RFC 1213, RFC 1215, RFC 1286, RFC 1442, RFC 1451, RFC 1493, RFC 1573, RFC 1643, RFC 1757, RFC 1907, RFC 2011, RFC 2012, RFC 2013, RFC 2233, RFC 2618, RFC 2665, RFC 2666, RFC 2674, RFC 2737, RFC 2819, RFC 2863, RFC 1157, RFC 1493, RFC 1215, RFC 3416</p>
IPv6	
IPv6	<p>IPv6 host mode</p> <p>IPv6 over Ethernet</p> <p>IPv6/IPv4 Dual Stack</p> <p>IPv6 neighbor and router discovery (ND)</p> <p>IPv6 stateless address auto-configuration</p> <p>Path Maximum Transmission Unit (MTU) discovery</p> <p>Duplicate Address Detection (DAD)</p> <p>ICMP version 6</p>
IPv6 ACL	Drop or rate limit IPv6 packets in hardware
IPv6 QoS	Prioritize IPv6 packets in hardware
Multicast Listener Discovery (MLD v1/2) Snooping	Deliver IPv6 multicast packets only to the required receivers
IPv6 applications	Web/SSL, Telnet server/SSH, DHCP Client, DHCP Autoconfig, Cisco Discovery Protocol (CDP), Link Layer Discovery Protocol (LLDP)

Feature	Description	
IPv6 Requests for Comments (RFCs) supported	<p>RFC 4443 (which obsoletes RFC2463) - ICMP version 6</p> <p>RFC 4291 (which obsoletes RFC 3513) - IPv6 address architecture</p> <p>RFC 4291 - IPv6 addressing architecture</p> <p>RFC 2460 - IPv6 specification</p> <p>RFC 4861 (which obsoletes RFC 2461) - Neighbor discovery for IPv6</p> <p>RFC 4862 (which obsoletes RFC 2462) - IPv6 stateless address auto-configuration</p> <p>RFC 1981 - Path MTU discovery</p> <p>RFC 4007 - IPv6 scoped address architecture</p> <p>RFC 3484 - Default address selection mechanism</p>	
Management		
Cisco Business Dashboard	Support direct management with Cisco Business Dashboard and mobile app. Eliminates the need to set up a separate hardware or virtual machine for the Cisco Business Dashboard Probe on site.	
Cisco Business mobile app	Mobile app for Cisco Business Switch and Wireless products. Helps to set up a local network in minutes and provide easy management at your fingertips.	
Cisco Network Plug and Play (PnP) agent	<p>The Cisco Network Plug and Play solution provides a simple, secure, unified, and integrated offering to ease new branch or campus device rollouts or for provisioning updates to an existing network. The solution provides a unified approach to provision Cisco routers, switches, and wireless devices with a zero touch deployment experience.</p> <p>Supports Cisco PnP Connect</p>	
Web user interface	Built-in switch configuration utility for easy browser-based device configuration (HTTP/HTTPS). Supports configuration, system dashboard, system maintenance, and monitoring	
Text-editable config files	Config files can be edited with a text editor and downloaded to another switch, facilitating easier mass deployment	
Command-line interface	Scriptable CLI; a full CLI is supported. User privilege levels 1 and 15 are supported for the CLI	
SNMP	Simple Management Network Protocol (SNMP) versions 1, 2c, and 3 with support for traps, and SNMP version 3 User-based Security Model (USM)	
Standard Management Information Bases (MIBs)	<p>MIB-II (RFC1213)</p> <p>IF-MIB (RFC2863)</p> <p>Bridge-MIB (RFC4188)</p> <p>Bridge-MIB-Extension (RFC2674)</p> <p>RMON (RFC2819)</p> <p>Etherlike MIB (RFC3635)</p> <p>Radius Client MIB (RFC2618)</p> <p>Entity MIB (RFC2737)</p> <p>POWER-ETHERNET-MIB (RFC3621)</p> <p>Syslog MIB (RFC3164)</p>	<p>Generic Traps MIB (RFC1215)</p> <p>SNMP-COMMUNITY-MIB</p> <p>SNMP-MIB</p> <p>LLDP-MIB</p> <p>LLDP-EXT-MED-MIB</p> <p>IEEE8023-LAG-MIB</p> <p>CISCO-PORT-SECURITY-MIB</p> <p>CISCO-ENVMON-MIB</p> <p>CISCO-CDP-MIB</p> <p>CISCO-CONFIG-COPY-MIB</p>

Feature	Description
Remote Monitoring (RMON)	Embedded RMON software agent supports 4 RMON groups (history, statistics, alarms, and events) for enhanced traffic management, monitoring, and analysis
IPv4 and IPv6 dual stack	Coexistence of both protocol stacks to ease migration
Port mirroring	Traffic on a port or VLAN can be mirrored to another port for analysis with a network analyzer or RMON probe. Up to 8 source ports can be mirrored to one destination port. Four sessions are supported.
Firmware upgrade	<ul style="list-style-type: none"> • Web browser upgrade (HTTP/HTTPS) and Trivial File Transfer Protocol (TFTP) • Dual images for resilient firmware upgrades
DHCP (Option 12, 66, 67, 82, 129, and 150)	DHCP options facilitate tighter control from a central point (DHCP server) to obtain IP address, auto-configuration (with configuration file download), DHCP relay, and hostname
Time synchronization	Simple Network Time Protocol (SNTP)
Login banner	Configurable multiple banners for web as well as CLI
Other management	HTTP/HTTPS; TFTP upgrade; DHCP client; Bootstrap Protocol (BOOTP); cable diagnostics; ping; traceroute; syslog
Discovery	
Bonjour	The switch advertises itself using the Bonjour protocol
Link Layer Discovery Protocol (LLDP) (802.1ab) with LLDP-MED Extensions	LLDP allows the switch to advertise its identification, configuration, and capabilities to neighboring devices that store the data in a MIB. LLDP-MED is an enhancement to LLDP that adds the extensions needed for IP phones.
Cisco Discovery Protocol	The switch advertises itself using the Cisco Discovery Protocol. Displays brief information for connected Cisco network devices, IP phones, and wireless access points
Power efficiency	
EEE compliance (802.3az)	Support 802.3az Energy Efficient Ethernet on all ports; substantially reduce the power consumption when link bandwidth is not at full utilization
Energy Detect	Automatically turns power off on Gigabit Ethernet and 10/100 RJ-45 ports when detecting a link down Active mode is resumed without loss of any packets when the switch detects the link up
Disable port LEDs	LEDs can be manually turned off to save on energy.
Time-based PoE	PoE power can be on or off based on user-defined schedule to save energy.
Time-based port operation	Link up or down based on user-defined schedule (when the port is administratively up).

Feature	Description																																	
Power over Ethernet																																		
802.3af PoE or 802.3at PoE+ delivered over any of the RJ-45 network ports within the listed power budgets	Switches support 802.3af, 802.3at, and Cisco pre-standard (legacy) PoE with maximum power of 30 W per port. This applies to the following PoE-enabled models; the maximum number of ports providing PoE power simultaneously is determined by the total PoE budget for the switch listed as below:																																	
	<table border="1" style="width: 100%; border-collapse: collapse;"> <thead> <tr> <th style="background-color: #cccccc;">Model Name</th> <th style="background-color: #cccccc;">PoE Power Budget</th> <th style="background-color: #cccccc;">Number of Ports That Support PoE</th> </tr> </thead> <tbody> <tr> <td>CBS220-8P-E-2G</td> <td>65 W</td> <td>8</td> </tr> <tr> <td>CBS220-8FP-E-2G</td> <td>130 W</td> <td>8</td> </tr> <tr> <td>CBS220-16P-2G</td> <td>130 W</td> <td>16</td> </tr> <tr> <td>CBS220-24P-4G</td> <td>195 W</td> <td>24</td> </tr> <tr> <td>CBS220-24FP-4G</td> <td>382 W</td> <td>24</td> </tr> <tr> <td>CBS220-48P-4G</td> <td>382W</td> <td>48</td> </tr> <tr> <td>CBS220-24P-4X</td> <td>195 W</td> <td>24</td> </tr> <tr> <td>CBS220-24FP-4X</td> <td>382 W</td> <td>24</td> </tr> <tr> <td>CBS220-48P-4X</td> <td>382W</td> <td>48</td> </tr> <tr> <td>CBS220-48FP-4X</td> <td>740W</td> <td>48</td> </tr> </tbody> </table>	Model Name	PoE Power Budget	Number of Ports That Support PoE	CBS220-8P-E-2G	65 W	8	CBS220-8FP-E-2G	130 W	8	CBS220-16P-2G	130 W	16	CBS220-24P-4G	195 W	24	CBS220-24FP-4G	382 W	24	CBS220-48P-4G	382W	48	CBS220-24P-4X	195 W	24	CBS220-24FP-4X	382 W	24	CBS220-48P-4X	382W	48	CBS220-48FP-4X	740W	48
	Model Name	PoE Power Budget	Number of Ports That Support PoE																															
	CBS220-8P-E-2G	65 W	8																															
	CBS220-8FP-E-2G	130 W	8																															
	CBS220-16P-2G	130 W	16																															
	CBS220-24P-4G	195 W	24																															
	CBS220-24FP-4G	382 W	24																															
	CBS220-48P-4G	382W	48																															
	CBS220-24P-4X	195 W	24																															
	CBS220-24FP-4X	382 W	24																															
CBS220-48P-4X	382W	48																																
CBS220-48FP-4X	740W	48																																
Pre-standard PoE	Support Cisco Pre-Standard PoE																																	
Intelligent PoE power management	Support the granular power negotiation with CDP/LLDP communication with PD devices after IEEE classification																																	
Hardware																																		
Buttons	Reset button																																	
Cabling type	Unshielded Twisted Pair (UTP) Category 5 or better for 10BASE-T/100BASE-TX; UTP Category 5 Ethernet or better for 1000BASE-T																																	
LEDs	System, Link/Act, Speed																																	
Flash	64 MB																																	
CPU memory	256 MB																																	

Feature	Description			
Ports	Model name	Total system ports	RJ-45 ports	Uplink ports
	CBS220-8T-E-2G	10 Gigabit Ethernet	8 Gigabit Ethernet	2 Gigabit Ethernet Small form-factor pluggable (SFP)
	CBS220-8P-E-2G	10 Gigabit Ethernet	8 Gigabit Ethernet	2 Gigabit Ethernet SFP
	CBS220-8FP-E-2G	10 Gigabit Ethernet	8 Gigabit Ethernet	2 Gigabit Ethernet SFP
	CBS220-16T-2G	18 Gigabit Ethernet	16 Gigabit Ethernet	2 Gigabit Ethernet SFP
	CBS220-16P-2G	18 Gigabit Ethernet	16 Gigabit Ethernet	2 Gigabit Ethernet SFP
	CBS220-24T-4G	28 Gigabit Ethernet	24 Gigabit Ethernet	4 Gigabit Ethernet SFP
	CBS220-24P-4G	28 Gigabit Ethernet	24 Gigabit Ethernet	4 Gigabit Ethernet SFP
	CBS220-24FP-4G	28 Gigabit Ethernet	24 Gigabit Ethernet	4 Gigabit Ethernet SFP
	CBS220-48T-4G	52 Gigabit Ethernet	48 Gigabit Ethernet	4 Gigabit Ethernet SFP
	CBS220-48P-4G	52 Gigabit Ethernet	48 Gigabit Ethernet	4 Gigabit Ethernet SFP
	CBS220-24T-4X	24 Gigabit Ethernet + 4 10 Gigabit Ethernet	24 Gigabit Ethernet	4 10G SFP+
	CBS220-24P-4X	24 Gigabit Ethernet + 4 10 Gigabit Ethernet	24 Gigabit Ethernet	4 10G SFP+
	CBS220-24FP-4X	24 Gigabit Ethernet + 4 10 Gigabit Ethernet	24 Gigabit Ethernet	4 10G SFP+
	CBS220-48T-4X	48 Gigabit Ethernet + 4 10 Gigabit Ethernet	48 Gigabit Ethernet	4 10G SFP+
	CBS220-48P-4X	48 Gigabit Ethernet + 4 10 Gigabit Ethernet	48 Gigabit Ethernet	4 10G SFP+
CBS220-48FP-4X	48 Gigabit Ethernet + 4 10 Gigabit Ethernet	48 Gigabit Ethernet	4 10G SFP+	
Packet Buffer	All numbers are aggregate across all ports as the buffers are dynamically shared.			
	Model name	Packet buffer		
	CBS220-8T-E-2G	4.1 Mb		
	CBS220-8P-E-2G	4.1 Mb		
	CBS220-8FP-E-2G	4.1 Mb		
	CBS220-16T-2G	4.1 Mb		
	CBS220-16P-2G	4.1 Mb		

Feature	Description			
	CBS220-24T-4G	4.1 Mb		
	CBS220-24P-4G	4.1 Mb		
	CBS220-24FP-4G	4.1 Mb		
	CBS220-48T-4G	12 Mb		
	CBS220-48P-4G	12 Mb		
	CBS220-24T-4X	12 Mb		
	CBS220-24P-4X	12 Mb		
	CBS220-24FP-4X	12 Mb		
	CBS220-48T-4X	16 Mb		
	CBS220-48P-4X	16 Mb		
	CBS220-48FP-4X	16 Mb		
	Supported SFP Modules	SKU	Media	Speed
MGBSX1		Multimode fiber	1000 Mbps	500 m
MGBLX1		Single-mode fiber	1000 Mbps	10 km
MGBLH1		Single-mode fiber	1000 Mbps	40 km
MGBT1		UTP Category 5	1000 Mbps	100 m
GLC-SX-MMD		Multimode fiber	1000 Mbps	550 m
GLC-LH-SMD		Single-mode fiber	1000 Mbps	10 km
GLC-BX-U		Single-mode fiber	1000 Mbps	10 km
GLC-BX-D		Single-mode fiber	1000 Mbps	10 km
GLC-TE		UTP cat 5e	1000 Mbps	100 m
SFP-H10GB-CU1M		Copper coax	10 Gig	1 m
SFP-10G-SR		Multimode fiber	10 Gig	26 m - 400 m
SFP-10G-LR		Single-mode fiber	10 Gig	10 km
SFP-10G-SR-S		Multimode fiber	10 Gig	26 m - 400 m
SFP-10G-LR-S		Single-mode fiber	10 Gig	10 km

Feature	Description	
Environmental		
Unit dimensions (W x D x H)	Model name	Unit dimensions
	CBS220-8T-E-2G	279 x 170 x 44 mm (11.0 x 6.7 x 1.7 in)
	CBS220-8P-E-2G	279 x 170 x 44 mm (11.0 x 6.7 x 1.7 in)
	CBS220-8FP-E-2G	279 x 170 x 44 mm (11.0 x 6.7 x 1.7 in)
	CBS220-16T-2G	440 x 203 x 44 mm (17.3 x 8.0 x 1.7 in)
	CBS220-16P-2G	440 x 203 x 44 mm (17.3 x 8.0 x 1.7 in)
	CBS220-24T-4G	440 x 203 x 44 mm (17.3 x 8.0 x 1.7 in)
	CBS220-24P-4G	440 x 257 x 44 mm (17.3 x 10.1 x 1.7 in)
	CBS220-24FP-4G	440 x 257 x 44 mm (17.3 x 10.1 x 1.7 in)
	CBS220-48T-4G	440 x 257 x 44 mm (17.3 x 10.1 x 1.7 in)
	CBS220-48P-4G	440 x 257 x 44 mm (17.3 x 10.1 x 1.7 in)
	CBS220-24T-4X	440 x 203 x 44 mm (17.3 x 8.0 x 1.7 in)
	CBS220-24P-4X	440 x 257 x 44 mm (17.3 x 10.1 x 1.7 in)
	CBS220-24FP-4X	440 x 257 x 44 mm (17.3 x 10.1 x 1.7 in)
	CBS220-48T-4X	440 x 257 x 44 mm (17.3 x 10.1 x 1.7 in)
	CBS220-48P-4X	440 x 350 x 44 mm (17.3 x 13.8 x 1.7 in)
CBS220-48FP-4X	440 x 350 x 44 mm (17.3 x 13.8 x 1.7 in)	
Unit weight	Model name	Unit weight
	CBS220-8T-E-2G	1.16 kg (2.56 lb)
	CBS220-8P-E-2G	1.18 kg (2.60 lb)
	CBS220-8FP-E-2G	1.18 kg (2.60 lb)
	CBS220-16T-2G	2.48 kg (5.47 lb)
	CBS220-16P-2G	3.03 kg (6.68 lb)
	CBS220-24T-4G	2.75 kg (6.06 lb)
	CBS220-24P-4G	4.07 kg (8.97 lb)
	CBS220-24FP-4G	4.10 kg (9.04 lb)

Feature	Description			
	CBS220-48T-4G	3.18 kg (7.01 lb)		
	CBS220-48P-4G	5.29 kg (11.66 lb)		
	CBS220-24T-4X	2.69 kg (5.93 lb)		
	CBS220-24P-4X	4.03 kg (8.88 lb)		
	CBS220-24FP-4X	4.03 kg (8.88 lb)		
	CBS220-48T-4X	3.54 kg (7.80 lb)		
	CBS220-48P-4X	5.36 kg (11.82 lb)		
	CBS220-48FP-4X	5.65 kg (12.46 lb)		
Power	100-240 V, 50-60 Hz, Internal: CBS220-16T-2G, CBS220-16P-2G, CBS220-24T-4G, CBS220-24P-4G, CBS220-24FP-4G, CBS220-48T-4G, CBS220-48P-4G, CBS220-24T-4X, CBS220-24P-4X, CBS220-24FP-4X, CBS220-48T-4X, CBS220-48P-4X, CBS220-48FP-4X 100-240 V, 50-60 Hz, External: CBS220-8T-E-2G, CBS220-8P-E-2G, CBS220-8FP-E-2G			
Certifications	UL (UL 60950), CSA (CSA 22.2), CE mark, FCC Part 15 (CFR 47) Class A, C-tick			
Operating temperature	0-50° C			
Storage temperature	-20° C to +70° C			
Operating humidity	10% to 90%, relative, noncondensing			
Storage humidity	10% to 90%, relative, noncondensing			
Power Consumption	Model name	System power consumption	Power consumption (with PoE)	Heat dissipation (BTU/hr)
	CBS220-8T-E-2G	110V=5.7W 220V=5.9W	N/A	20.13
	CBS220-8P-E-2G	110V=7.8W 220V=8.2W	110V=81.2W 220V=81.6W	278.43
	CBS220-8FP-E-2G	110V=9.1W 220V=9.1W	110V=151.4W 220V=148.9W	516.6
	CBS220-16T-2G	110V=11.1W 220V=11.4W	N/A	38.9
	CBS220-16P-2G	110V=16.8W 220V=18.3W	110V=160.2W 220V=159.4W	546.63
	CBS220-24T-4G	110V=18.0W 220V=18.0W	N/A	61.42

Feature	Description			
	CBS220-24P-4G	110V=30.2W 220V=30.4W	110V=244.3W 220V=240.3W	833.59
	CBS220-24FP-4G	110V=30.8W 220V=30.8W	110V=459W 220V=445W	1,566.17
	CBS220-48T-4G	110V=36.5W 220V=36.1W	N/A	124.54
	CBS220-48P-4G	110V=52.6W 220V=53.0W	110V=478.2W 220V=464W	1,631.69
	CBS220-24T-4X	110V=23.2W 220V=23.6W	N/A	80.5
	CBS220-24P-4X	110V=36.9W 220V=37.6W	110V=248.7W 220V=244.4W	848.6
	CBS220-24FP-4X	110V=39.6W 220V=39.6W	110V=470W 220V=456.4W	1,603.71
	CBS220-48T-4X	110V=41.0W 220V=41.2W	N/A	140.58
	CBS220-48P-4X	110V=54.8W 220V=55.1W	110V=482W 220V=468W	1,644.65
	CBS220-48FP-4X	110V=65.7W 220V=64.4W	110V=900W 220V=875.3W	3,070.92
Acoustic Noise and Mean Time Between Failure (MTBF)	Model name	Fan (number)	Acoustic noise	MTBF @ 25° C (hours)
	CBS220-8T-E-2G	Fanless	N/A	1,489,560
	CBS220-8P-E-2G	Fanless	N/A	315,326
	CBS220-8FP-E-2G	Fanless	N/A	660,457
	CBS220-16T-2G	Fanless	N/A	1,062,289
	CBS220-16P-2G	Fanless	N/A	611,476
	CBS220-24T-4G	Fanless	N/A	1,049,371
	CBS220-24P-4G	2	25° C: 42.7 dB	587,473
	CBS220-24FP-4G	2	25° C: 43.2 dB	588,411
	CBS220-48T-4G	1	25° C: 35.0 dB	727,181

Feature	Description			
	CBS220-48P-4G	1	25° C: 34.8 dB	452,351
	CBS220-24T-4X	1	25° C: 34 dB	1,372,359
	CBS220-24P-4X	2	25° C: 42.7 dB	617,232
	CBS220-24FP-4X	2	25° C: 44.2 dB	588,411
	CBS220-48T-4X	1	25° C: 32.6 dB	420,827
	CBS220-48P-4X	1	25° C: 35.1 dB	265,589
	CBS220-48FP-4X	1	25° C: 37.7 dB	289,406
Package contents				
Package contents	<ul style="list-style-type: none"> • Cisco Business 220 Series Ethernet switch • Power cord or adaptor • Mounting kit • Quick start guide 			

System requirements

Minimum requirements

Table 3. Minimum requirement

Feature	Description
Web browser	Chrome, Firefox, Edge, Safari
Ethernet cable	Category 5e Ethernet network cable
Others	TCP/IP, network adapter, and network operating system (such as Microsoft Windows, Linux, or Mac OS) installed on each computer in the network

Ordering information

Table 4 provides ordering information for Cisco Business 220 Series Smart Switches.

Table 4. Ordering information

Model name	Order product ID	Description
Gigabit Ethernet		
CBS220-8T-E-2G	CBS220-8T-E-2G-xx	8 10/100/1000 ports 2 Gigabit SFP
CBS220-8P-E-2G	CBS220-8P-E-2G-xx	8 10/100/1000 ports with 65W power budget 2 Gigabit SFP
CBS220-8FP-E-2G	CBS220-8FP-E-2G-xx	8 10/100/1000 ports with 130W power budget 2 Gigabit SFP
CBS220-16T-2G	CBS220-16T-2G-xx	16 10/100/1000 ports 2 Gigabit SFP
CBS220-16P-2G	CBS220-16P-2G-xx	16 10/100/1000 ports with 130W power budget 2 Gigabit SFP
CBS220-24T-4G	CBS220-24T-4G-xx	24 10/100/1000 ports 4 Gigabit SFP
CBS220-24P-4G	CBS220-24P-4G-xx	24 10/100/1000 ports with 195W power budget 4 Gigabit SFP
CBS220-24FP-4G	CBS220-24FP-4G-xx	24 10/100/1000 ports with 382W power budget 4 Gigabit SFP
CBS220-48T-4G	CBS220-48T-4G-xx	48 10/100/1000 ports 4 Gigabit SFP
CBS220-48P-4G	CBS220-48P-4G-xx	48 10/100/1000 ports with 382W power budget 4 Gigabit SFP
Gigabit Ethernet with 10G Uplinks		
CBS220-24T-4X	CBS220-24T-4X-xx	24 10/100/1000 ports 4 10G SFP+
CBS220-24P-4X	CBS220-24P-4X-xx	24 10/100/1000 PoE+ ports with 195 W power budget 4 10G SFP+ port
CBS220-24FP-4X	CBS220-24FP-4X-xx	24 10/100/1000 PoE+ ports with 382 W power budget

Model name	Order product ID	Description
		4 10G SFP+ port
CBS220-48T-4X	CBS220-48T-4X-xx	48 10/100/1000 ports 4 10G SFP+ port
CBS220-48P-4X	CBS220-48P-4X-xx	48 10/100/1000 PoE+ ports with 382 W power budget 4 10G SFP+ port
CBS220-48FP-4X	CBS220-48FP-4X-xx	48 10/100/1000 PoE+ ports with 740 W power budget 4 10G SFP+ port

The -xx in the product ID is a country/region-specific suffix. For example, the complete product ID of CBS220-24T-4G for the United States is CBS220-24T-4G-NA. Please refer to Table 4 for the suffix to use for your country or region.

Cisco Business products are available only through distributors and not available to order directly from Cisco. Partners should order these products from their preferred distributors. End users should order from their preferred partners.

Accessories such as power supply and mounting kit are included with the device and are not available to order separately as spare parts. Replacement of malfunctioning accessories can be processed under the warranty with a support case.

Table 5. Country/region suffix for product ID

Suffix	Country/region
-NA	USA, Canada, Mexico, Colombia, Chile and rest of Latin America
-BR	Brazil
-AR	Argentina
-EU	European Economic Area, Switzerland, Turkey, Russia, Ukraine, Israel, United Arab Emirates, Egypt, South Africa, Indonesia, Philippines, Vietnam, Thailand, Korea
-UK	United Kingdom, Saudi Arabia, Qatar, Kuwait, Singapore, Hong Kong, Malaysia
-AU	Australia, New Zealand
-CN	China
-IN	India
-KR	Korea

The products may also be available in countries/regions not listed above. Not all product models are offered in all countries/regions. For Korea, either the -EU or -KR suffix will be used, depending on product models. Please consult with your local Cisco sales representative or Cisco partner for more details.

Warranty information

Cisco Business 220 series smart switches are offered with 3-year limited hardware warranty with return to factory replacement. This warranty also includes complementary one-year phone or online chat support by Small Business Support Center and software updates for the warranty term.

Cisco and partner services

World-class services

To extend the support coverage beyond the warranty provisions, you can choose Cisco Smart Net Total Care™ Service, which helps you get the most value from Cisco solutions, providing peace of mind at an affordable price. The subscription-based service offers next-business-day advanced hardware replacement, software upgrades, access to the Cisco Small Business Support Center, and telephone and online chat support.

To learn more, visit <https://www.cisco.com/c/en/us/solutions/small-business/services.html>.

Cisco Capital

Flexible payment solutions to help you achieve your objectives

Cisco Capital makes it easier to get the right technology to achieve your objectives, enable business transformation and help you stay competitive. We can help you reduce the total cost of ownership, conserve capital, and accelerate growth. In more than 100 countries, our flexible payment solutions can help you acquire hardware, software, services and complementary third-party equipment in easy, predictable payments. [Learn more](#).

Custom call to action

A powerful foundation for your small business network

As you strive to make your business more competitive and efficient, every dollar counts. Cisco Business 220 Series Smart Switches give you the simplicity, security, and reliability you need, without making you pay for advanced features you don't. With Cisco Business 220 Series switches, you can rest assured that your business applications and communications tools are running on a strong technology foundation, so you can focus on achieving your business goals.

For more information about the Cisco Business 220 Series Smart Switches, visit <https://www.cisco.com/c/en/us/products/switches/business-220-series-smart-switches/index.html>.

Americas Headquarters

Cisco Systems, Inc.
San Jose, CA

Asia Pacific Headquarters

Cisco Systems (USA) Pte. Ltd.
Singapore

Europe Headquarters

Cisco Systems International BV Amsterdam,
The Netherlands

Cisco has more than 200 offices worldwide. Addresses, phone numbers, and fax numbers are listed on the Cisco Website at <https://www.cisco.com/go/offices>.

Cisco and the Cisco logo are trademarks or registered trademarks of Cisco and/or its affiliates in the U.S. and other countries. To view a list of Cisco trademarks, go to this URL: <https://www.cisco.com/go/trademarks>. Third-party trademarks mentioned are the property of their respective owners. The use of the word partner does not imply a partnership relationship between Cisco and any other company. (1110R)